

## Diaphragm seal

flanged process connection  
extended diaphragm

### Applications

- chemical and petrochemical
- corrosive, viscous or crystallizing media
- thick walls or insulation
- high temperature

### Standards / Approvals

- EN 1092-1 / DIN 2501
- ASME B 16.5
- other on request



### Features

- flanged connection
- extended diaphragm
- customized extension dimensions
- wide range of instrument connections

### Pressure rating

- view tables on page 2

### Process connection

- flanged DN40 to DN100
- flanged 1-1/2" to 4"
- other on request

### Instrument connection

- 1/2" BSPP, NPT
- 1/4" BSPP, NPT
- M20x1,5
- other on request

### Wetted parts material

- 304 (1.4301) stainless steel
- 316L (1.4404) stainless steel
- 316Ti (1.4571) stainless steel
- special materials on request:  
Hastelloy C276, Duplex, Monel, Tantalum,  
Titanium, Nickel

### Filling fluid

- silicone oil (max. 200°C)
- high temperature oil (max. 315°C)
- oil for vacuum service
- vegetable oil
- fluorine oil
- other on request

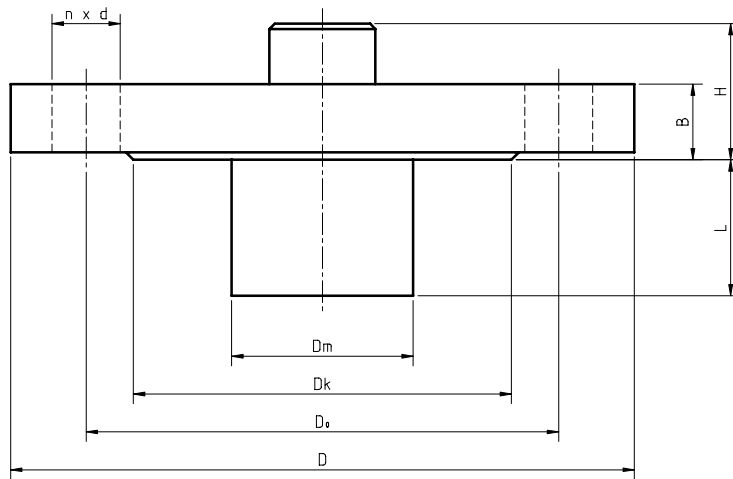
### Optional capillary

- length up to 15m
- armored, axial entry
- 304 (1.4301) stainless steel

### Options

- radiator
- radial capillary entry
- DIN 2512 form N or F flange face
- DIN 2513 form V13 or R13 flange face
- other on request





### Dimensions for EN 1092-1 / DIN 2501 (in mm)

DN	PN	D <sub>m</sub>	D <sub>k</sub>	D <sub>o</sub>	D	B	H	n	d	L
40	10/40	40	88	110	150	18	66	4	18	acc. to request
	63/100	40	88	125	170	26	74	4	22	
50	10/40	48	102	125	165	20	68	4	18	
	63	48	102	135	180	26	74	4	22	
	100	48	102	145	195	28	76	4	26	
80	10/16	75	138	160	200	20	37	8	18	
	25/40	75	138	160	200	24	41	8	18	
	63	75	138	170	215	28	45	8	22	
100	100	75	138	180	230	32	49	8	26	
	10/16	95	152	180	220	20	37	8	18	
	25/40	95	162	190	235	24	41	8	26	
100	63	95	162	200	250	30	47	8	30	
	100	95	162	210	265	36	53	8	33	

### Dimensions for ASME B 16.5 (in mm)

DN	Class	D <sub>m</sub>	D <sub>k</sub>	D <sub>o</sub>	D	B	H	n	d	L
1-1/2"	150	40	73	98,5	130	22	70	4	16	acc. to request
	300	40	73	114,5	155	22	70	4	22	
	600	40	73	114,5	155	29,5	77,5	4	22	
2"	150	48	92	120,5	150	20	68	4	20	
	300	48	92	127	165	22,5	70,5	8	20	
	600	48	92	127	165	32	80	8	20	
3"	150	75	127	152,5	190	24	41	4	20	
	300	75	127	168,5	210	29	46	8	22	
	600	75	127	168,5	210	38,5	55,5	8	22	
4"	150	95	158	190,5	230	24	41	8	20	
	300	95	158	200	255	32	49	8	22	
	600	95	158	216	275	45	62	8	26	

**Ordering:** model - extension diameter (if not standard) and length - process connection (DN, PN or Class, flange face type) - material (wetted parts, diaphragm, flange) - capillary length (if applicable) - instrument connection - other options or requests

For proper diaphragm seal manufacturing and calibration, process data - temperatures, pressures and media type - should be provided.